

ETHIRIS[®]

VIDEO MANAGEMENT SOFTWARE

Installing Ethiris 

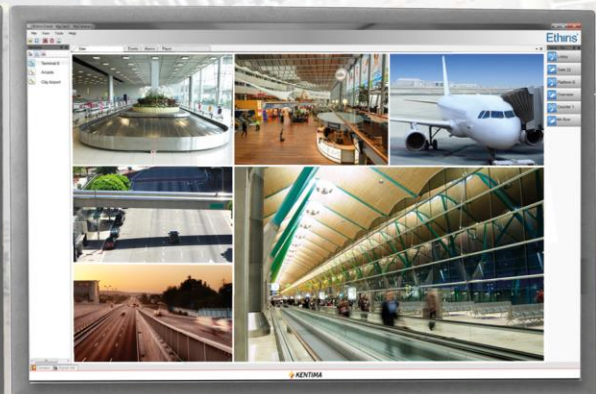
Camera 4

Camera 5

Camera



Camera



Camera 11



Camera

Copyright © 2020 Kentima AB

Reproduction of the content of this manual, whether in full or in part, is prohibited under the Swedish Act on Copyright in Literary and Artistic Works without the consent of the copyright holders. This prohibition applies to any form of reproduction by printing, copying, tape recording, transfer to electronic media, etc.

Production and layout: Kentima AB

Version: 11.2

First edition: March 2020

Printing: Kentima AB

Trademarks: **Ethisis** and **WideQuick** are registered trademarks. All other marks belong to their respective owners.

Kentima AB

Postal address:

PO Box 174

SE-245 22 STAFFANSTORP

Street address:

Kastanjevägen 4

SE-245 44 STAFFANSTORP

Email address:

info@kentima.com

Internet:

www.kentima.com

Contents

1 Introduction	1:1
1.1 Introduction	1:1
1.1.1 Use	1:1
1.2 General Description	1:1
2 Installation	2:1
2.1 Installing Ethisis.....	2:1
2.1.1 System Requirements.....	2:1
2.1.2 What downloads are available?	2:3
2.1.3 Installation Procedure	2:4
2.2 Modifying the Installation.....	2:14
2.3 Uninstallation.....	2:17
2.4 Upgrade from Free.....	2:19
3 Explanation of Terms	3:1
4 Index	4:1

1 Introduction	1:1
1.1 Introduction	1:1
1.1.1 Use	1:1
1.2 General Description	1:1

1 Introduction

1.1 Introduction

This manual is designed to help users install their Ethisis systems.

There are a total of 6 various manuals for Ethisis. Besides this one, there are also *Getting started with Ethisis*, *Admin - Configuration for Ethisis*, *Ethisis Client User's Guide*, *Integration with Ethisis*, and *Getting started with Ethisis Mobile*.

This part of the manual suite describes the installation process of an Ethisis system. For information on how to get started with your Ethisis system after installation, please refer to the *Getting Started with Ethisis* manual.

For in-depth information on the various functions in Ethisis, please see the *Admin - Configuration for Ethisis* manual and the *Ethisis Client User's Guide* manual.

1.1.1 Use

The primary purpose of Ethisis is camera surveillance, which is performed in two ways. One way is manually to monitor live video from different cameras. The other way involves recording video from connected cameras. Recording can take place continuously from one or more cameras or in the form of video sequences when a recording condition is met. The recorded video can be played back afterward using sophisticated timelines and a VCR-like interface.

1.2 General Description

Ethisis is a surveillance system that uses network cameras and analog cameras, together with video encoders from different suppliers.

The product is divided into several program parts, where *Ethisis Server* and *Ethisis Client* are the most important ones. The server part manages all cameras and stores video on the hard drive. The client part displays live video and recorded video sequences.

There is also a program called *Ethisis Admin*, which is used for configuring all Ethisis modules in the system. In *Ethisis Admin*, you configure the *Ethisis Servers* by, e.g., defining which cameras are connected to each *Ethisis Server* when video shall be recorded, what frame rate and resolution to use, etc. You also define the view layout in the various *Ethisis Clients* in the system using *Ethisis Admin*.

In theory, an unlimited number of cameras could be connected to each Ethisis server and be displayed in the desired number of Ethisis clients simultaneously. In practice, however, bandwidth and screen resolution sets the limits for the appropriate number of cameras connected.

There are different license levels for Ethisis, which permit different numbers of cameras to be connected. To meet the need for a large number of cameras, Ethisis is designed with a focus on scalability. Scalability means that it is possible to divide your system into several Ethisis servers and thus distribute the load over several computers.

**Ethisis Server**

Ethisis Server is the core of an Ethisis system. It handles all communication with the cameras and recording of video on the hard drive. Ethisis Server runs as a service under the operating system and is automatically started as soon as the computer is started. An Ethisis system can be comprised of one or several Ethisis Servers.

**Ethisis Client**

Ethisis Client is used for viewing live video and recorded video. An Ethisis Client can connect to one or several Ethisis Servers for access to cameras. An Ethisis system can contain one or several Ethisis Clients.

**Ethisis Admin**

Ethisis Admin is used for configuring the different parts in an Ethisis system. Ethisis Server and Ethisis Client are configured with this common tool. From any computer in the system, Ethisis Admin can be run and used for configuring all Ethisis components on-site.

**Ethisis Mobile**

Ethisis Mobile is an app for connecting to your Ethisis systems via your cell. With Ethisis Mobile you can watch live video from various cameras in your system. You can also see all the alarms.

**Ethisis Server OPC Server**

Ethisis Server OPC Server is a separate Ethisis component that is used for letting other systems gain access to the information in Ethisis Server. Any other system with an OPC client can connect to one or several Ethisis Servers and read/write to all signals in Ethisis Server. E.g. starting recording of a camera or control a PTZ camera.

**Ethisis ActiveX**

Ethisis ActiveX is a component used for viewing live video from a camera connected to an Ethisis Server. This component can be used in any system that can handle standard ActiveX components.

**Ethisis Viewer**

Ethisis Viewer is a separate program used for viewing exported video from an Ethisis system.

**Ethisis Signature Validator**

Ethisis Signature Validator is a separate software that is used to validate the authenticity of exported jpg images, so-called *watermark*.

2 Installation	2:1
2.1 Installing Ethisis.....	2:1
2.1.1 System Requirements.....	2:1
2.1.2 What downloads are available?	2:3
2.1.3 Installation Procedure	2:4
2.2 Modifying the Installation.....	2:14
2.3 Uninstallation.....	2:17
2.4 Upgrade from Free.....	2:19

2 Installation

2.1 Installing Ethisis



Observe if updating

Observe if updating Ethisis!

Note that if you have configured Ethisis Surveillance Service to run under a specific user account, it might be necessary to reapply these settings after an update.



Some components are 64-bit only

If you are installing or upgrading on a 32-bit operating system, be aware that it is no longer possible to install Ethisis Server, Ethisis Client, Ethisis Viewer, or Ethisis Camera Simulator on a 32-bit operating system.

2.1.1 System Requirements

Ethisis installation is divided into several parts. There are Ethisis Server, Ethisis Client, Ethisis Admin, Ethisis Server OPC Server, Ethisis ActiveX, Ethisis Client Remote component, an example part, a camera simulator, and Ethisis Signature Validator. You can install the parts you want on each computer.

All Ethisis components require .Net framework 4.6 and the Visual C++ runtime files. These requirements are automatically installed if not already present on the computer. These files approximately require 250 MB hard disk space.

Ethisis Server is protected by a license code. The *Kentima License Handler* tool is automatically installed together with this program as needed. The License Handler application requires about 13 MB of hard disk space.

All components of Ethisis require Windows 7 or later to run. Server operating systems are preferred for *Ethisis Server*. Therefore it is recommended to use Windows Server 2012 R2 or later for computers, which will only run Ethisis Server. Client operating systems are recommended for the other Ethisis components. When installing both Ethisis Server and another component on the same computer, it is recommended to install a client operating system such as Windows 10 64-bit or later.

Recommended requirements for a computer running *Ethisis Server* and/or *Ethisis Client* are:

Only *Ethisis Server*:

- Windows Server 2012 R2 or later.
- 16 GiB RAM or more.

Only *Ethisis Client*:

- Windows 10 64-bit
- 16 GiB RAM or more.
- DirectX 10 compatible graphics card with 1GiB RAM or more. Such as the Nvidia GTX 1050/1650.

Ethisis Server and *Ethisis Client* on the same computer:

- Windows 10 64-bit
- 16 GiB RAM or more.
- DirectX 10 compatible graphics card with 1GiB RAM or more. Such as the Nvidia GTX 1050/1650

The recommended amount of RAM is sufficient for smaller systems that are not using many cameras or long pre-event recording times. Larger systems with many cameras and/or longer pre-event recording times might require additional RAM.

Also, note that the current hardware of the server/network may limit the actual number of cameras/clients that can be connected. It is up to the integrator to ascertain that the offered hardware can handle the proposed system.

The following operating systems (with at least service pack) are required to run Ethisis:

Windows 7 SP1 – 64-bit ²

Windows 8 and later – 64-bit

Windows 10 – 64-bit ¹

Windows Server 2008 SP2 ²

Windows Server 2008 R2 SP1 ²

Windows Server 2012

Windows Server 2012 R2 ¹

Windows Server 2016 Standard (desktop experience or server core ³)

Windows Server 2019 Standard (desktop experience or server core ³)

¹ Recommended operating system, 64-bit

² These operating systems have gone out of support from Microsoft and are not recommended to use.

³ Only Ethisis Server is supported on server core. If you want to run Ethisis on a server core version of Windows Server, contact support to get more information.



Support for a 32-bit operating system is ending.

Note that version 10.x is the last version that supports a 32-bit operating system for Ethisis Admin and Ethisis Client. Ethisis Server already requires a 64-bit operating system. Install Ethisis on a 64-bit operating system for best compatibility in the future.

For the latest and most up to date information regarding supported operating systems, see the *Release Notes* of the current version.

2.1.2 What downloads are available?

On the download page on kentima.se, there are a number of files available.

All the current manuals are downloadable, as well as for a few of the previous versions.

The same applies to the current installation packages for Ethisis VMS.

These are available in three flavors.

- **Full version** – This contains the complete installer for all the parts of the Ethisis VMS.
- **Only Admin** – This contains only the installer for Ethisis Admin.
- **Only Client** – This contains only the installer for Ethisis Client.

Note that when upgrading an installation made with the full installer, where only, for instance, the Ethisis Client has been installed. This cannot be done with anything other than the full installation package.

In the same way, the Client Only installation, is not upgradable using the full installation package.

2.1.3 Installation Procedure

The following section describes the steps required to install a fully functioning Ethisis system.

Installation procedure for Ethisis:

1. After decompressing the .zip file, run the EthisisFullSetup file.

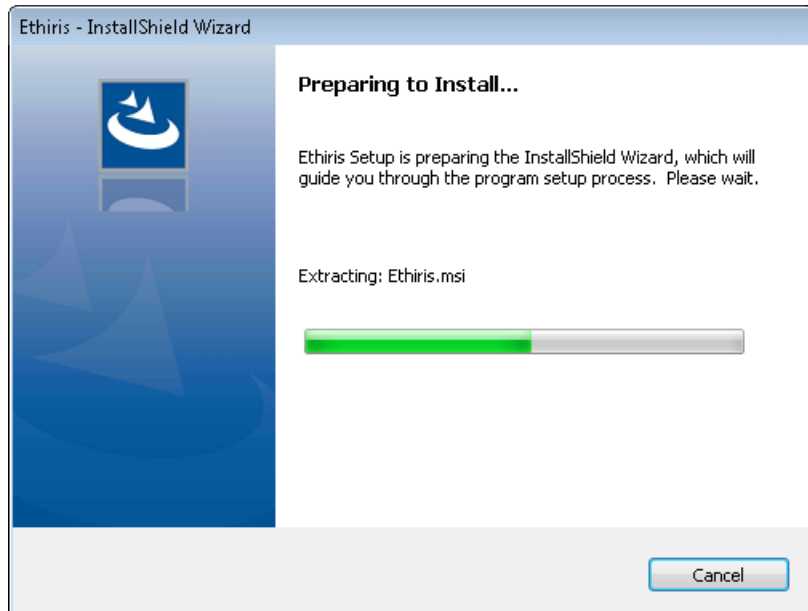


Figure 2.1 The first dialog just shows that the installation is being prepared.

2. The next dialog welcomes you to the installation of Ethisis.

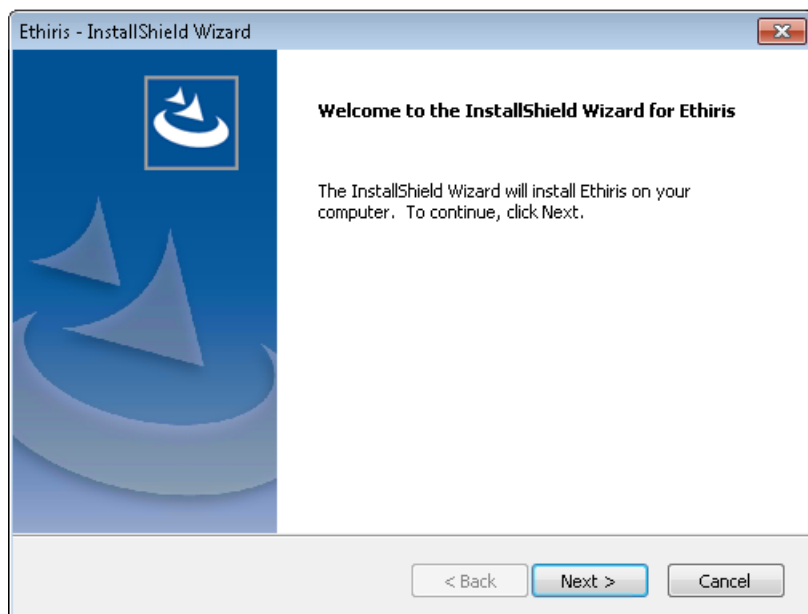


Figure 2.2 Welcome dialog for Ethisis installation.

Click Next> to continue.

3. The next dialog shows the license agreement.

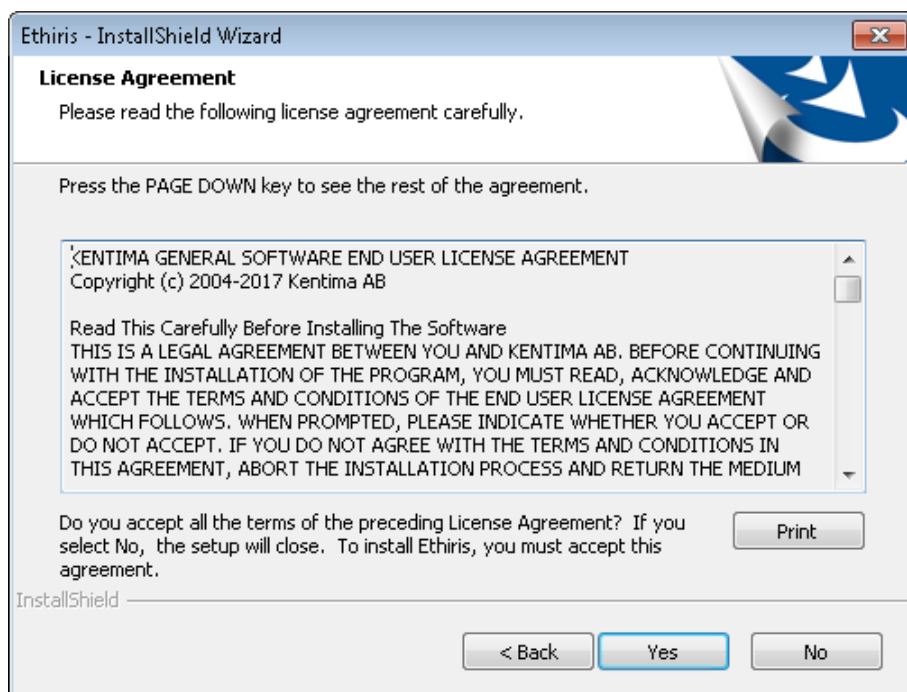


Figure 2.3 The license agreement contains a lot of text, but it is safest to read it.

Read carefully ☺ and **click Yes** to continue.

4. The next dialog asks for customer information. You can choose to install the application for *Anyone who uses this computer (All Users)* or **Only for me**. *All Users* means that whoever is logged onto the computer can run Ethisis. *Only for me* means that only you (when you are logged onto the computer) can run Ethisis.

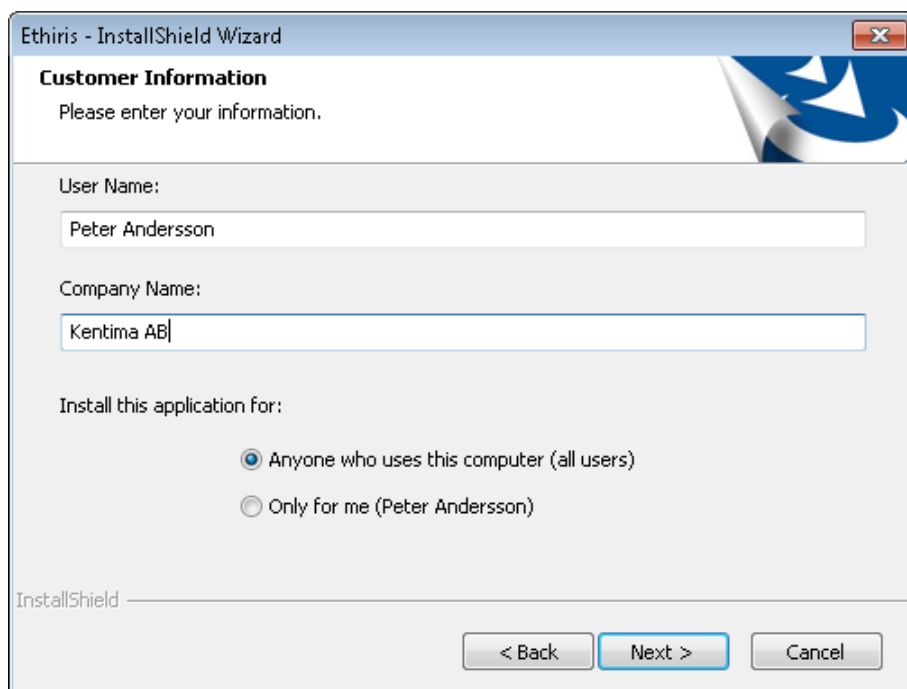


Figure 2.4 The customer information dialog lets you enter some personal information.

Enter the information and **click Next>** to continue.

5. In the following dialog, you can change the target folder.

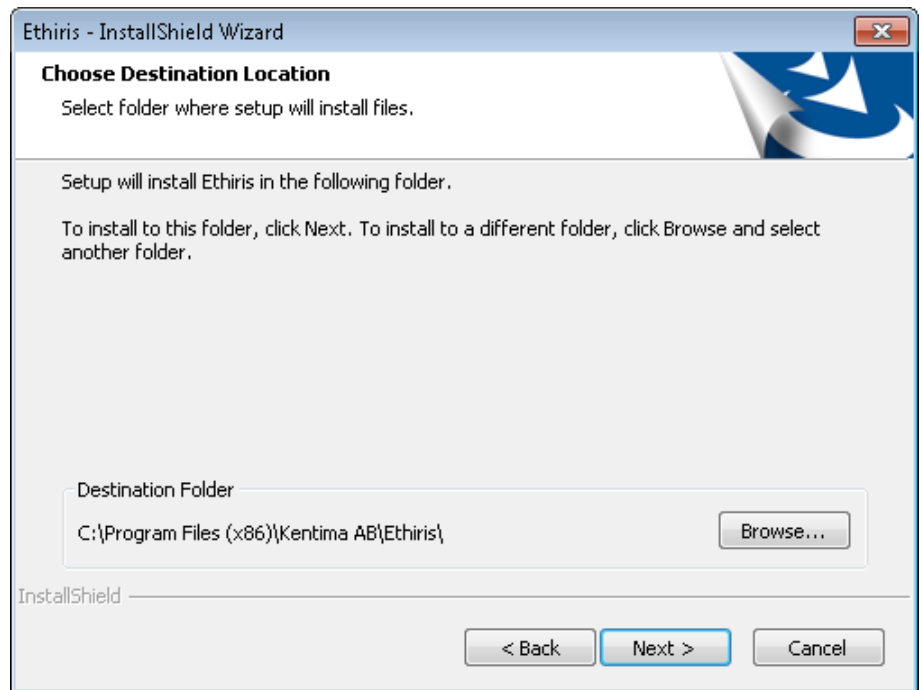


Figure 2.5 Dialog for changing the target folder.

To change the target folder, **click** the *Browse...* button.

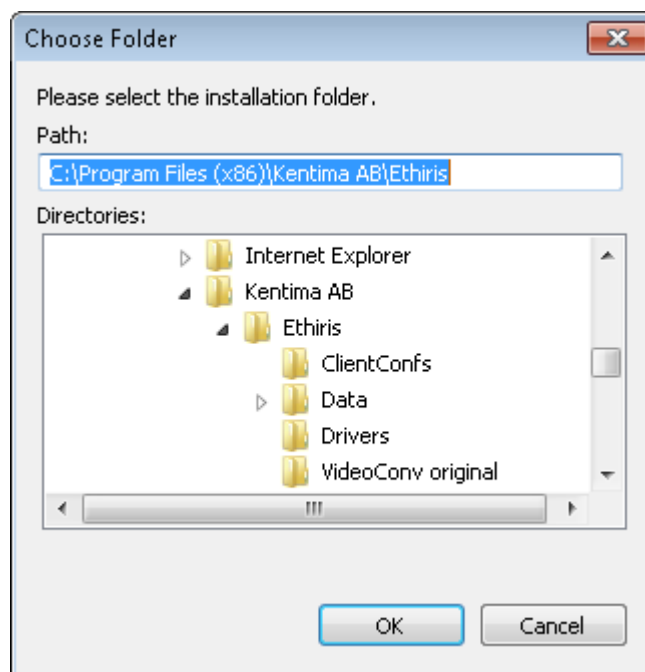


Figure 2.6 The change target folder dialog.

Specify the desired installation folder in *Path:* or browse for the folder. **Click** *OK* when you are ready or *Cancel* to retain the standard destination folder.

6. In the next dialog, you can choose the type of installation.

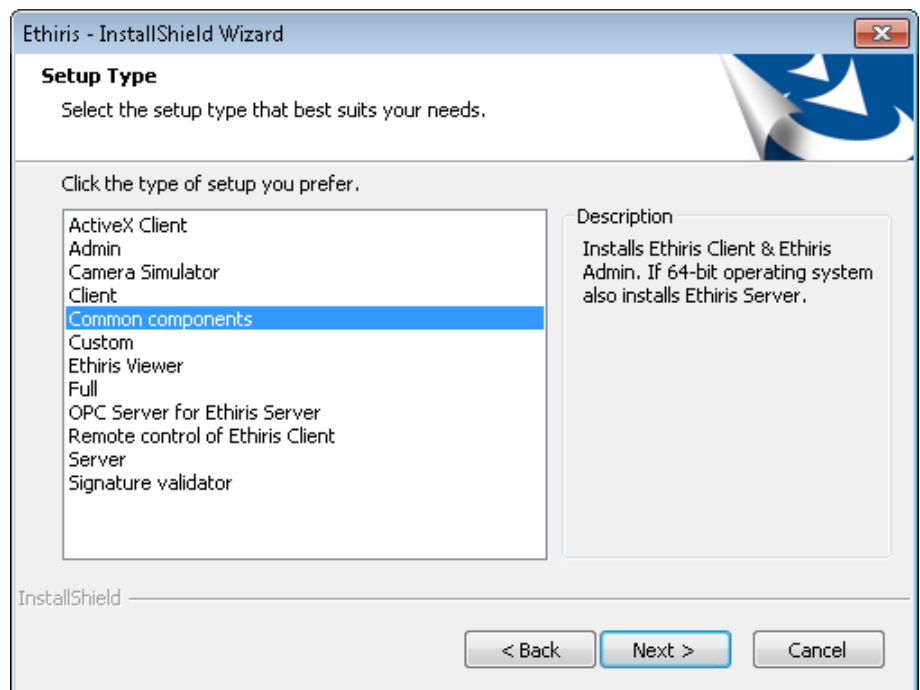


Figure 2.7 Select Custom to determine which program functions are to be installed.

An **ActiveX Client** installation will install the Ethisis ActiveX component that can be used for viewing live video from cameras connected to an Ethisis Server. The ActiveX component can be used in an external application such as HMI/SCADA like WideQuick or web browsers like Internet Explorer. If you select *ActiveX Client 32-bit* or *ActiveX Client 64-bit*, you can go to item 10 in this description. We do not recommend to install both the 32-bit and 64-bit versions on the same computer.

An **Admin** installation will install the *Ethisis Admin* program along with the required files. If you select *Admin*, you can go to item 10 in this description.

A **Camera Simulator** installation will install the Ethisis camera simulator together with prerecorded video from 3 cameras comprising a little more than a 1-minute video. The simulator can be used as an alternative to real cameras for generating “live” video. This component can be installed on 64-bit operating systems only. If you select *Camera Simulator*, you can go to item 10 in this description.

A **Client** installation will install the client part of Ethisis. If you select *Client*, you can go to item 10 in this description.

The option **Common components** is preselected. This selection installs the client part, the server part, and the admin configuration part of Ethisis. This is the most common type of installation in small systems in which everything runs on one computer, hence the name *Common components*. If you select *Common components*, you can go to item 8 in this description.

A **Custom** installation, however, lets you choose which program functions are to be installed. If you select custom installation, please read the next step in this description.

An **Ethisis Viewer** installation will install only Ethisis Viewer that is used to playback exported materials. This component can be installed on 64-bit operating systems only. If you select *Ethisis Viewer*, you can go to item 10 in this description.

A **Full** installation will install all parts of Ethisis. This installation type includes both the camera simulator and an example project for remote control of the Ethisis client. If you select *Full*, you can go to item 8 in this description.

An **OPC Server for Ethisis Server** installation installs only an OPC server to access signals in the data store for one or more Ethisis servers via OPC. After the installation has been completed, the OPC server will be accessible to applications that have an OPC client for connection to an OPC server. The OPC server must be configured separately to set it up for communication with one or more Ethisis servers. If you select *OPC Server for Ethisis Server*, you can go to item 10 in this description.

A **Remote control of Ethisis Client** installation will install a COM component for remotely controlling one or several Ethisis Clients. This component can be used from external applications that can handle COM components. This includes most HMI/SCADA programs as well as developer tools like Visual Studio from Microsoft. If you select *Remote control of Ethisis Client*, you can go to item 10 in this description.

A **Server** installation will install the server part of Ethisis. The Ethisis Server will be installed as a service that will be automatically started after installation is complete. This installation can be done on 64-bit operating systems only. The *Kentima License Handler* application will also be installed, which is used for registering and licensing the server software. If you select *Server*, you can go to item 8 in this description.

A **Signature validator** installation will install the Ethisis Signature Validator that is used to validate the authenticity of exported JPG images and Ethisis export files. A shortcut is created in the start menu.

Select the *type of installation* you want and then **click Next>** to continue.

7. A custom installation lets you choose which program functions are to be installed.

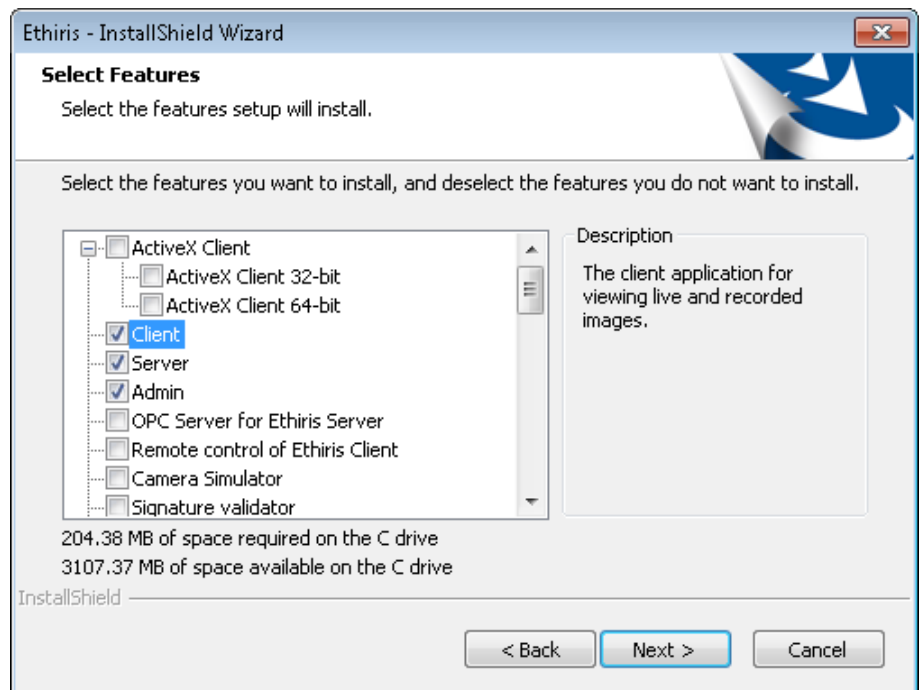


Figure 2.8 In a custom installation, you can select the program functions you want.

There are several different options for installing Ethisis. There are 11 main components to choose from *ActiveX Client 32-bit*, *ActiveX Client 64-bit*, *Client*, *Server*, *Admin*, *OPC Server for Ethisis Server*, *Remote control of Ethisis Client*, *Camera Simulator*, *Signature validator*, *Samples*, *Language selection*, *Ethisis manuals*, and *Ethisis Viewer*.

ActiveX Client 32/64-bit contains an ActiveX component for viewing live video from cameras connected to an Ethisis Server. The ActiveX component can be an integrated part of an external application such as an HMI/SCADA program like WideQuick or a web browser like Internet Explorer.

Client contains the client program used to display live video and recorded video from the cameras in the system.

Server contains the server program that is installed as a so-called service under the operating system on the computer. The server manages communication with the cameras and stores video on the hard disk when recording conditions are met. The server also detects various alarm states. The server can be installed on 64-bit operating systems only.

Admin contains a program for configuring all Ethisis components in the system, such as servers and clients. Using this program, you can configure both a local Ethisis component and any Ethisis component which is accessible via the network. This means that, in a large system, you can administer your entire Ethisis system, which may consist of many servers and clients, from one computer.

OPC Server for Ethisis Server contains an OPC server to which OPC clients can connect and thus gain access to the signals in one or more Ethisis servers.

Remote control of Ethis Client contains a COM component for integration in external applications such as HMI/SCADA systems or developer tools such as Visual Studio from Microsoft. The remote control component can be used to control one or several Ethis Clients with respect to which client view is displayed or playback of recorded video.

Camera Simulator contains both a program which simulates a 24-channel video server and video sequences for four simulated cameras. This module is practical for demonstration purposes as you can run Ethis with full functionality without needing any physical cameras. The camera simulator can be installed on 64-bit operating systems only.

Samples contain examples of various applications in connection with Ethis. It currently includes a project in Visual Basic, which shows how you can remotely control one or more Ethis clients via a COM interface (the *Remote control of Ethis Client*), another Visual Basic project demonstrating the *ActiveX Client* and finally an OPC simulator which simulates a system with an OPC server. You can connect to this simulated system via the script editor in Ethis and thus gain access to the signals in the simulator.

Signature validator contains a program for validation of exported jpg images and video files exported in Ethis export format.

Language selection contains several different language selections that are selected as default. *English* is the main language and is always available.

Ethis manuals contain all Ethis manuals in pdf format in Swedish and English.

Ethis Viewer contains a program for viewing video exported in the native Ethisexport format.

Select the *program functions* you want and then **click Next>** to continue.

8. If you have chosen to install *Server*, the next dialog will ask you to choose between the commercial version and Ethis Free.

Ethis Free is a free version that doesn't require a product code. This version can be installed by anyone. It is limited to allow connection of up to 4 cameras and two clients simultaneously. There is no time limit, so you can use Ethis Free for as long as you want.

You may very well start off with Ethis Free and then upgrade to the commercial version. Then you order a product code from one of the Ethis resellers and enter this product code via *Kentima License Handler*. Finally, you retrieve a license code, preferably from Kentima Partner pages on the web.

If you choose to install the commercial version of Ethis, you have to enter a valid product code to proceed with the installation.

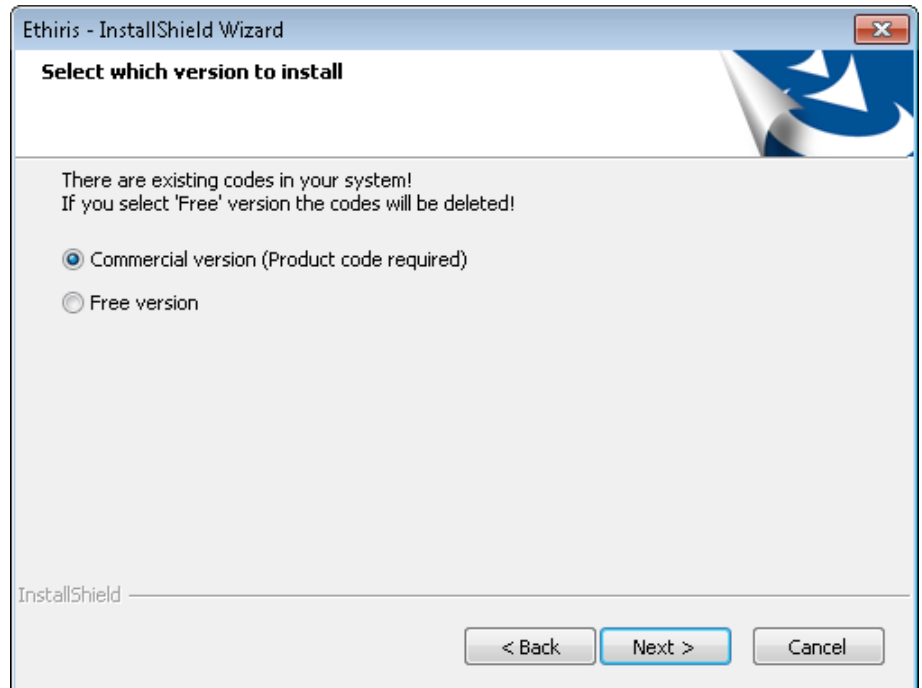


Figure 2.9 Dialog selecting between the commercial version and Ethisis Free.

9. If you have chosen to install *Server* and also have selected the commercial version, the next dialog will ask you to enter the product code for the server.

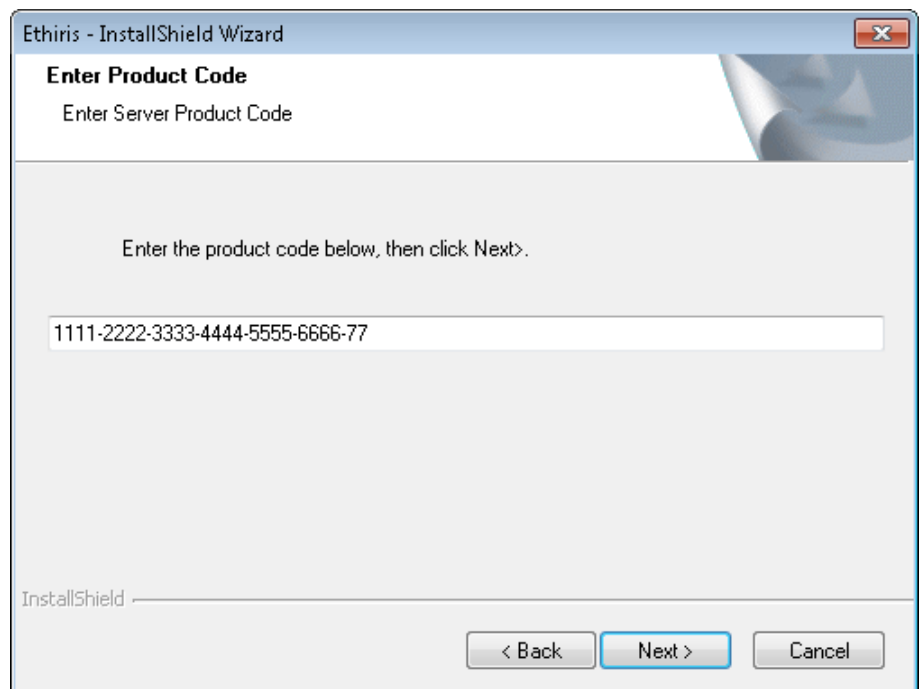


Figure 2.10 Dialog for entering the server's product code.

The product code is delivered on a separate paper, or you received it when you downloaded Ethisis from the internet.

Enter the *product code* and then **click** *Next>* to continue the installation.



You can paste the full product code.

When you enter the product code, you don't have to type the dashes. They will automatically be added to the correct places. The input dialog automatically converts all letters to upper case letters.

10. Before the installation starts to copy files, a dialog is displayed showing the selections you have made.

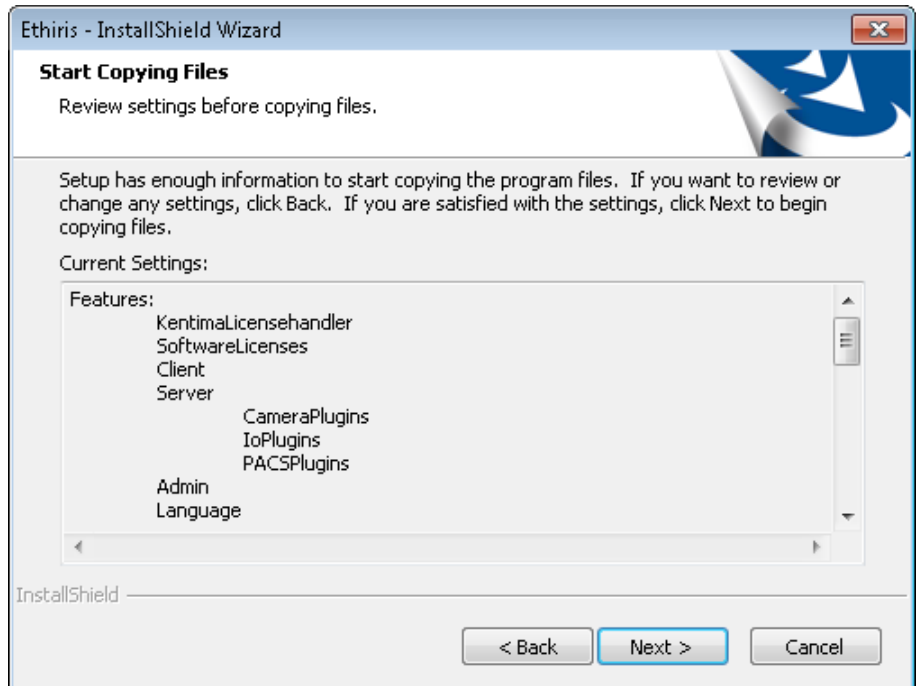


Figure 2.11 Dialog for confirming the selections you have made.

If you are happy with your selections, **click Next>** to continue the installation.

11. File copying begins.

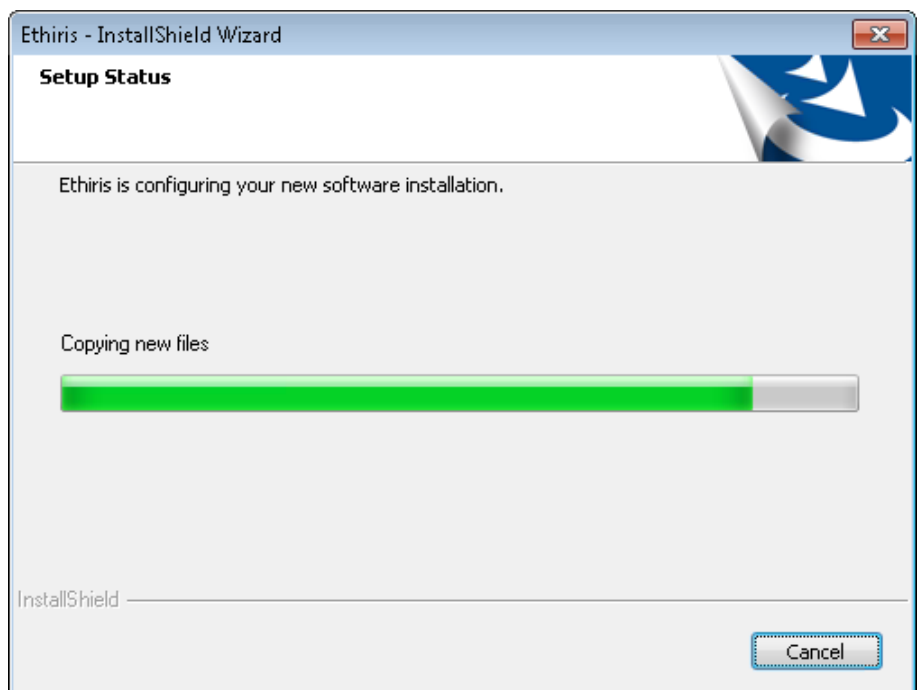


Figure 2.12 The Setup Status dialog lets you follow what happens during the installation.

12. Finally, the finish dialog will be displayed.

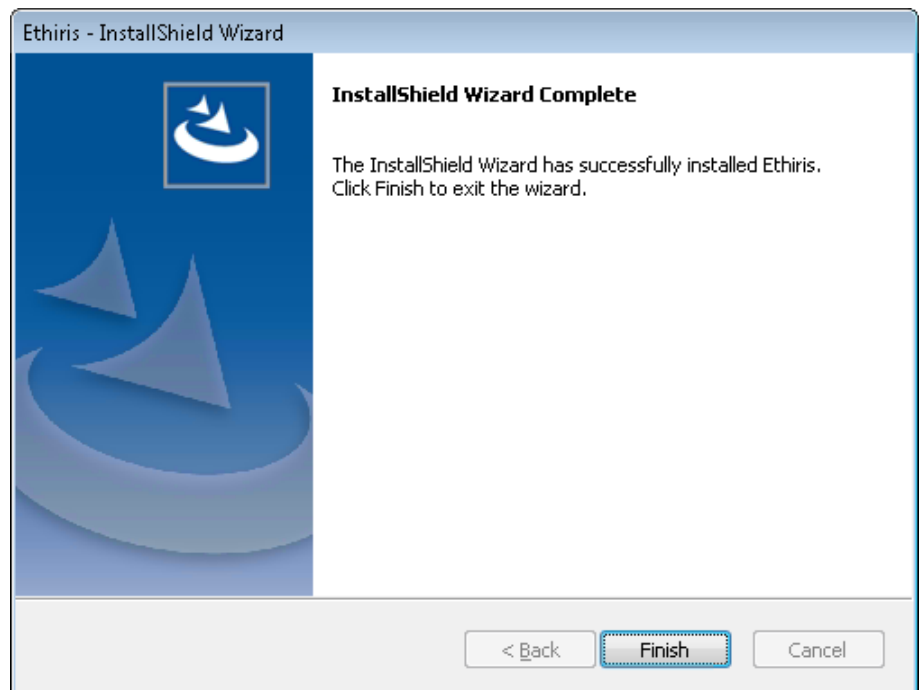


Figure 2.13 Dialog stating that the installation is complete.

Click *Finish* to complete the installation of Ethisis.

The installation is now complete. For information on how to start Ethisis easily, see the *Getting Started with Ethisis* manual.

2.2 Modifying the Installation

If you subsequently want to add or remove any program function, this can easily be done.

1. **Select *Programs and Features*** in Control Panel. A list of all programs installed is displayed.

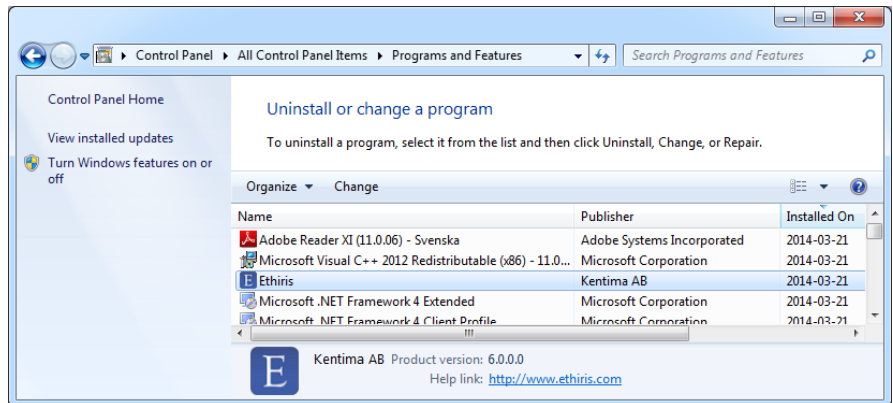


Figure 2.14 The Add/Remove programs dialog in Control Panel.

Click the line with *Ethisis* and click **Change**.

2. The welcome dialog offers the options to *Modify*, *Repair*, and *Remove*.

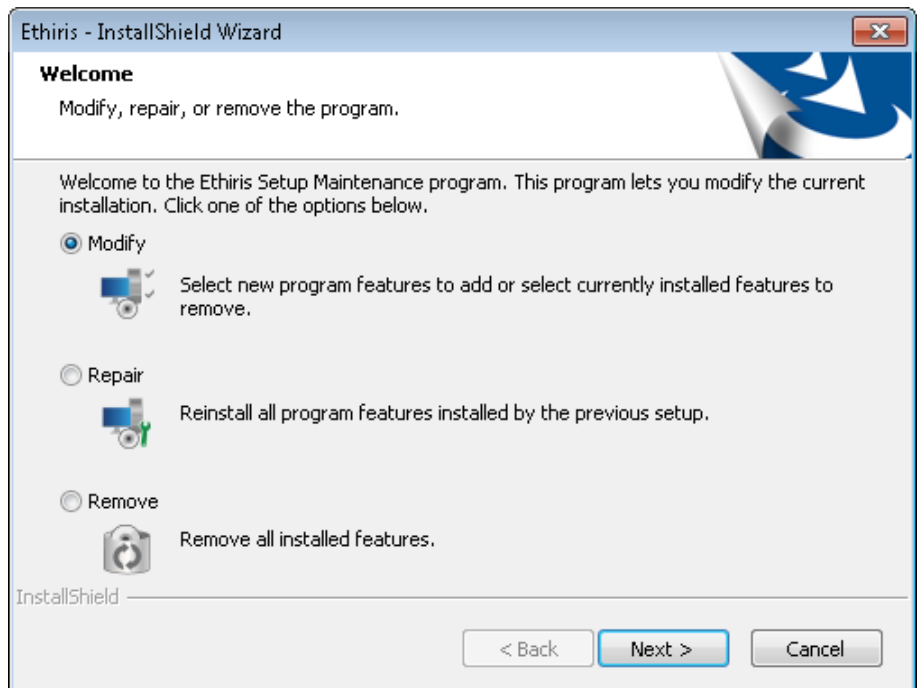


Figure 2.15 Welcome dialog for modifying the installation.

Select *Modify* and click **Next>**.

3. The next dialog allows you to select which program functions you want to add or remove. Those who are checked will remain installed or will be installed if they have not already been installed.

Note! Do not uncheck those items you want to keep installed. Only uncheck items that you explicitly wish to uninstall.



Do **not** uncheck items you want to keep

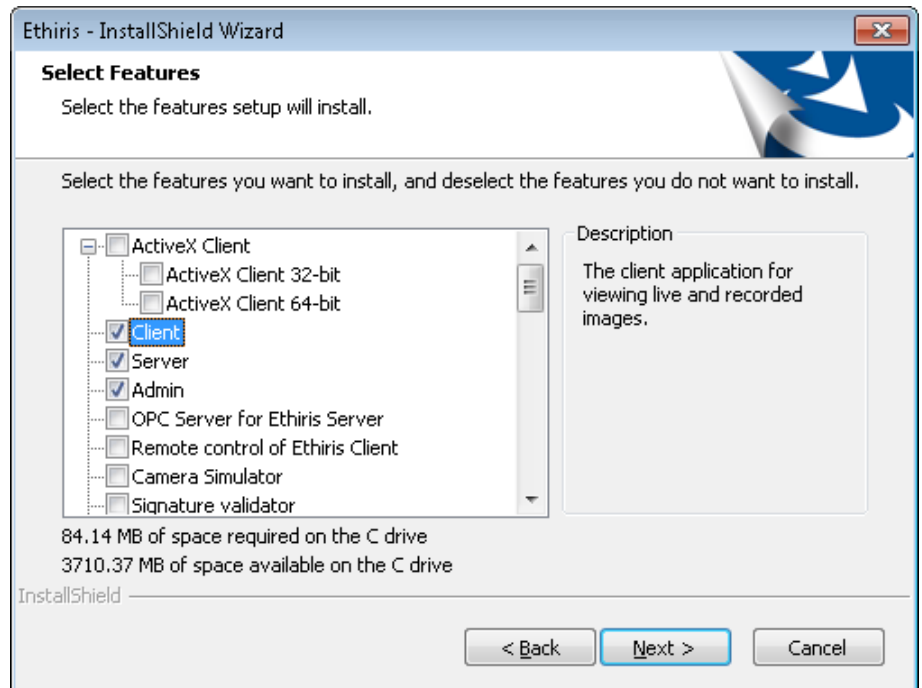


Figure 2.16 Dialog for selecting program functions.

Select the relevant program functions and click **Next>**.

4. In most cases, no restart is required but, if the installation requests that the computer be restarted, this is because one or more files have been locked and cannot be replaced until the computer is restarted.

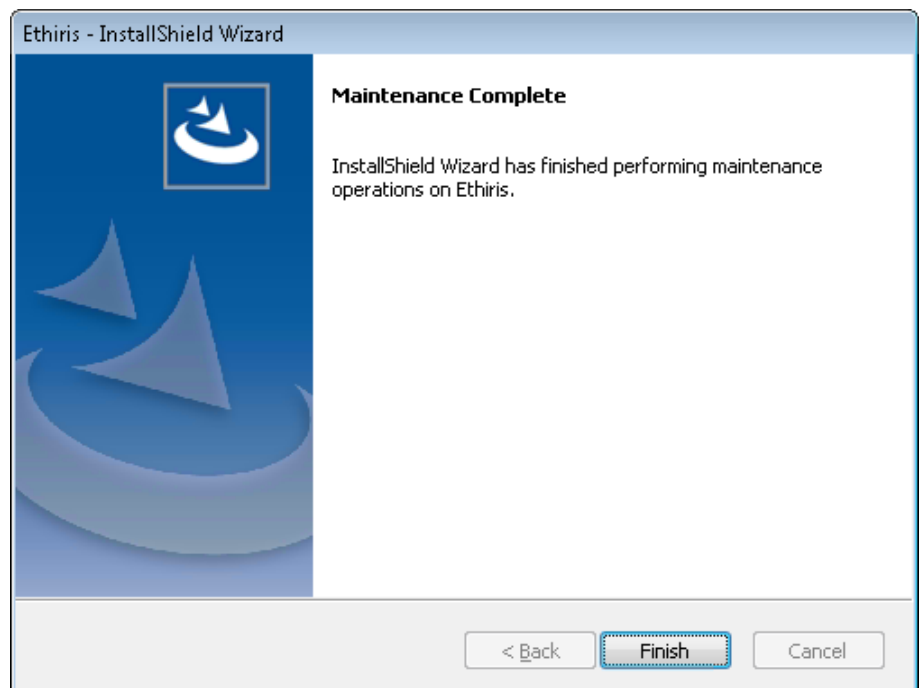


Figure 2.17 Dialog stating that the installation has been completed.

Click **Finish>** to complete the reinstatement of Ethisis.

2.3 Uninstallation

To uninstall Ethisis:

1. **Select Programs and Features** in Control Panel. A list of all programs installed is displayed.

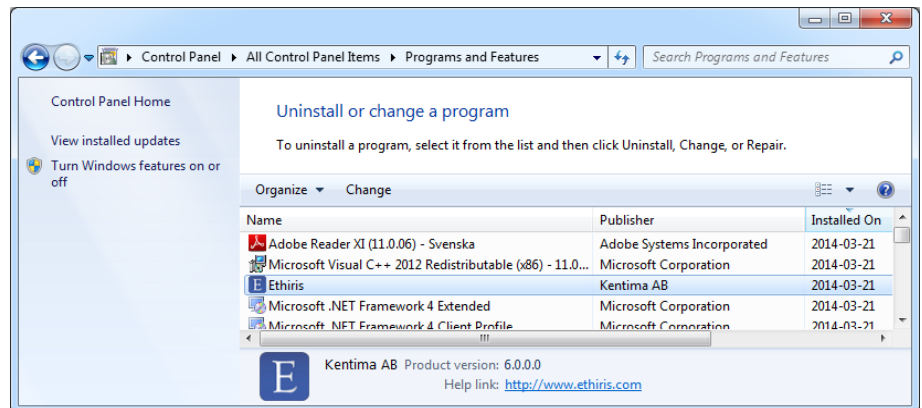


Figure 2.18 The Add/Remove programs dialog in Control Panel.

Click the line with *Ethisis* and **click** *Change/Remove*.

2. The welcome dialog offers the options to *Modify*, *Repair*, and *Remove*.

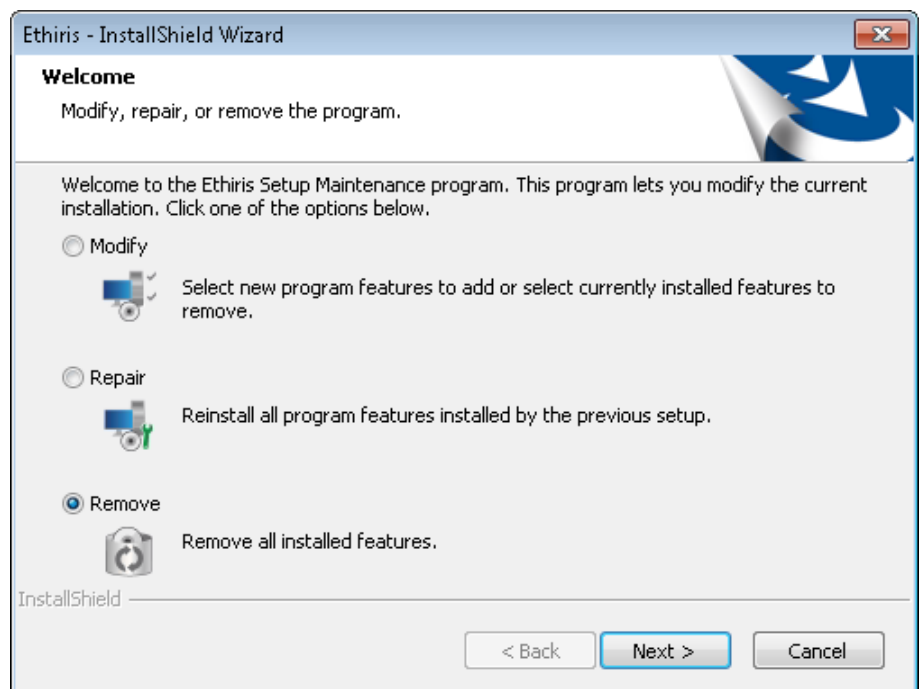


Figure 2.19 Welcome dialog for removing the installation.

Select *Remove* and **click** *Next>*.

3. Before uninstallation starts, you have the chance to change your mind.

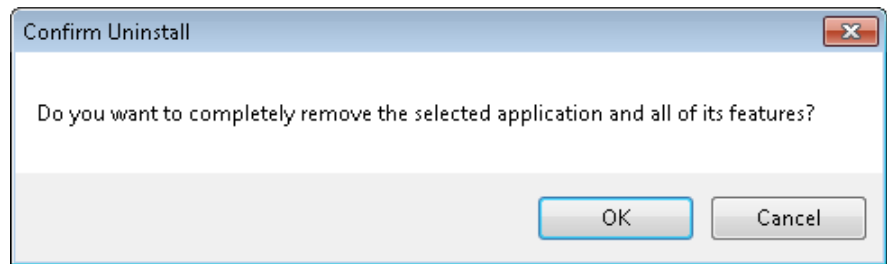


Figure 2.20 Confirmation dialog for uninstallation.

To continue the uninstallation of Ethisis, **click OK**.

4. No restart is typically required but, if a restart is required, a dialog to this effect is displayed.

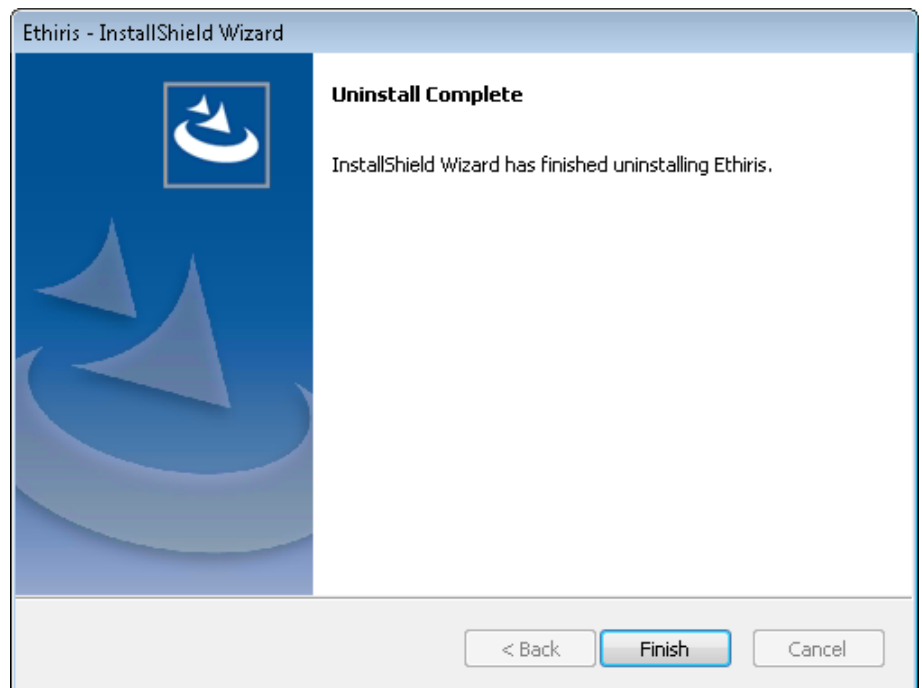


Figure 2.21 Dialog for completing the uninstallation.

Click Finish> to complete the uninstallation of Ethisis.

As some files have probably been modified since the original installation of Ethisis, these files will not be deleted by the installation program during uninstallation. In this case, there will also be individual folders left on the hard disk.

These can be deleted manually if required.

One folder is the installation folder for Ethisis. By default, this is *C:\Program Files (x86)\Kentima AB\Ethisis*. It is OK to delete the entire *Kentima AB* folder.

And that concludes the uninstallation of Ethisis.

2.4 Upgrade from Free

If you are running Ethisis Free and want to upgrade to one of the commercial license levels *Basic*, *Extended*, *Advanced* or *Premium* you do as follows:

1. **Purchase** the desired license from a reseller of Ethisis and get a *product code*.
2. **Start** the program *Kentima License Handler*, **select** *Ethisis – Server* in the list of products in the first step of the guide.



Figure 2.22 Select Ethisis – Server in the product list.

Click **Next**>.

3. In the next step, current license information is displayed. **Select Upgrade license**.

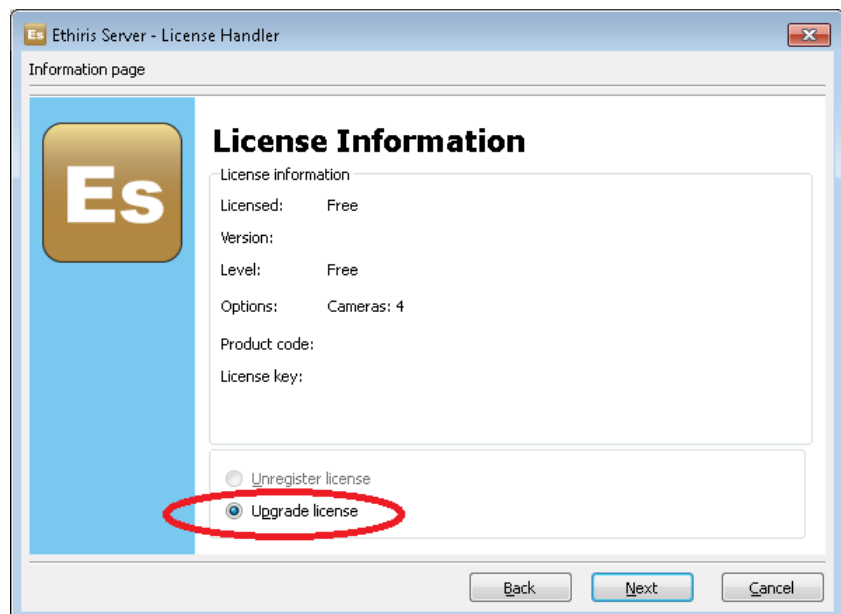


Figure 2.23 Select Upgrade license.

To continue, click **Next**>.

4. In this step, you enter the product code you received from your Ethisis reseller.

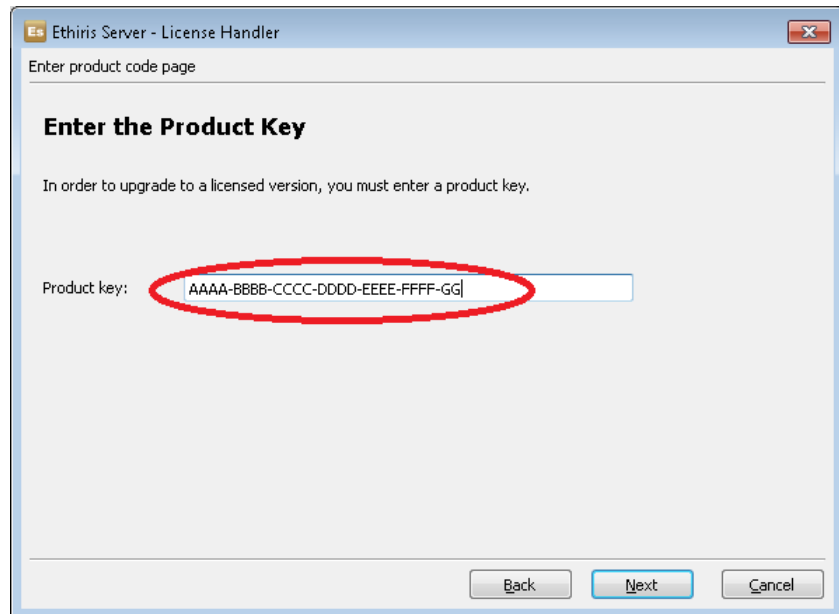


Figure 2.24 Dialog for entering the product code.

Click **Next**> to generate a unique *Registration code*.

5. Now a unique registration code is generated. The code shall, in one way or another, be sent to Kentima to receive a License code. The easiest way is to go to the Kentima Partner pages and retrieve the license code. If you are not already a partner, it's quick to apply for a partnership on the Kentima web page. The partnership is free of charge.

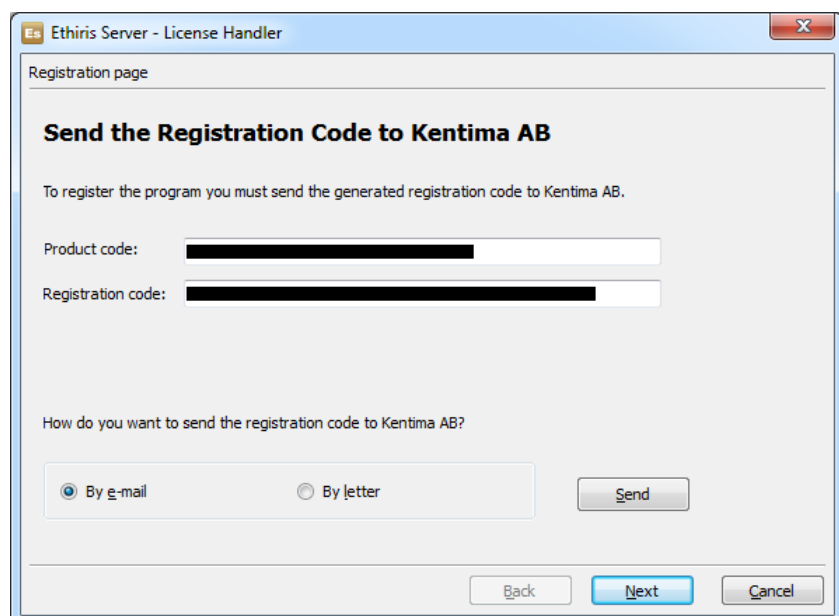


Figure 2.25 Copy the registration code and use it for retrieving a license code.

Click **Next**> to enter the *license code*.

- Here you enter the *License code* you got back from Kentima.

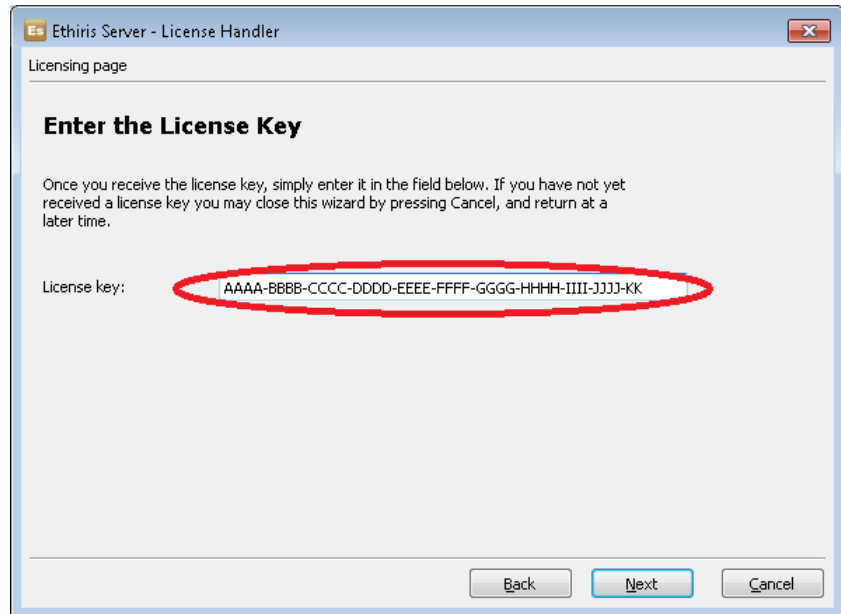


Figure 2.26 Paste the license code you got back from Kentima.

Click **Next**> to verify the *License code*.

- If the license code is valid, the final step should display the current license level and options.

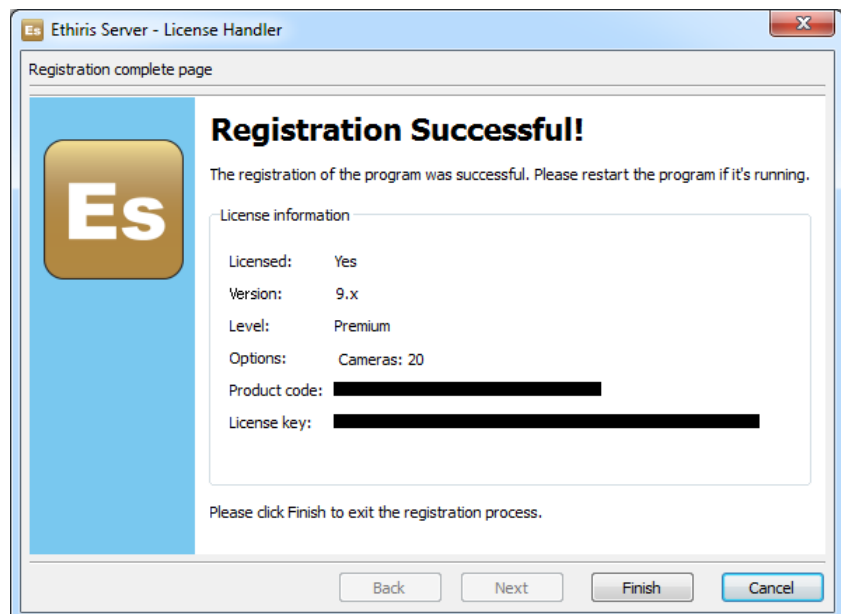


Figure 2.27 Registration successful.

Click **Finish**> to finish the upgrade.

3 Explanation of Terms

AVI

Audio Video Interleaved. A file format for video sequences. Ethisis can export images to such files that can be played back in, e.g., Windows Media player.

COM

Component Object Model. A binary communication standard from Microsoft that is used for communicating between different program components. COM is the foundation of OPC.

H.264

a video compression format that is a development of MPEG-4. It is also called MPEG-4 part 10.

IP address

Each unit in a computer network has a unique IP address that consists of 4 groups of digits. Each group can be 0-255, for example, 192.168.30.29.

License key

A key that is received from Kentima Solutions after payment has been made, and a registration key has been submitted. The license key is used to “unlock” Ethisis via the license dialog.

MJPEG

Motion JPEG, a video compression format where each frame is a separate JPEG image. This is one of the most common video formats for an IP camera.

MPEG-4

A video compression format where a complete image (i.e. I-frame) is followed by several smaller images depicting the difference compared to the last image (P-frames or B-frames). This is a more compact format compared to MJPEG.

Network camera

A type of camera that can be directly connected to a network. The camera device has a unique IP address.

OPC

OLE for Process Control. A communication standard developed within the automation industry for communication between different systems.

Product code

A key following each Ethisis license. The key shall be entered at installation time. The Ethisis server requires a product code at installation.

Protocol

The selected protocol specifies what method to use when Ethisis requests images from a camera. Today the choices are MJPEG and MPEG-4.

Registration key

The key that uniquely identifies an instance of a program. The key is generated by clicking the *Register* button in the license dialog. This key must be sent to Kentima Solutions AB to unlock Ethisis.

RTP

Real-Time Protocol.

TCP/IP

Transmission Control Protocol/Internet Protocol.

Test license

When Ethisis is installed, a test license is received with which you can test the product free of charge.

4 Index

D

Downloads 2:3

I

Installation

 Modify 2:14

 Type of 2:6

 Uninstalling 2:17

L

License Agreement 2:4

P

Product code

 Server 2:11

Purpose

 Ethisis 1:1

S

System requirements 2:1

T

Target folder 2:5

KENTIMA PRODUCT LINES

SECURITY

VIDEO MANAGEMENT SOFTWARE

NETWORK VIDEO RECORDER

PSIM SOFTWARE

AUTOMATION

HMI/SCADA SOFTWARE

INDUSTRIAL COMPUTERS

OPERATOR PANELS

Mailing address:

PO BOX 174
SE-245 22 Staffanstorp
Sweden

Visiting address:

Kastanjevägen 2
245 44 Staffanstorp
Sweden

Phone: +46 (0)46-25 30 40

Fax: +46 (0)46-25 03 10

E-mail: info@kentima.com

www.kentima.com